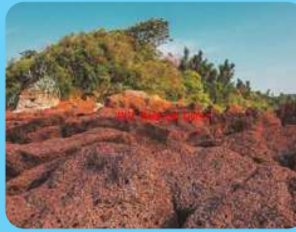


# Kinmen

Lieuu Township

## - Nature & Ecology -

### 01 Mao Gong Shi Island Recreation Area



Mao Gong Shi Island Recreation Area is located at the north of Little Kinmen Island gaining its name from the endemic red rocks "Maogong-shi". In Minnan, "Maogong (Cat Male)" is referred to ugly male with scars, dents and unsmooth skin on the face, hence, rocks with dents are also named "Mao Gong Shi".



### 02 Lingshui Lake



The best route for bird watching in Lieuu Township, Kinmen County is located between Xihu and Lingshui Lake. Walking along the coastal boulevard for about two kilometers, visitors may watch 30 or 40 species of birds, or, visitors can follow the oyster guard post to the beach to can see a variety of waterbirds and enriched wetlands ecology through the tide and ebb.



### 05 Kirin Mountain



Kirin Mountain is located in the north-central part of Lieuu Township with an elevation of 119 meters. As the highest place on the island of Lieuu Township. In the early days, in response to continuous warfare, for war preparedness and military training, the Kirin Shooting Range was built in 1958 and then discontinued its original use and turned to sightseeing and recreation purpose in 2009.



### 06 Donggang Quarry



Donggang is located on the southeast side of Lieuu. As the coast is rich in granite, it was turned into a quarry more than ten years ago for mining operations. The coastal topography was damaged due to long-term mining, but it created a clear section that facilitates the observation of the rock formation. Rocks with a different color from granite can be seen, which is worthy of close observation.



## Taiwan Tourist Shuttle Bus

台灣好行遊金門

### A Shuitou-Zhaishan Route

Departs from Jincheng Station at 08:30

Jincheng Station → Public Health Center, Jincheng Township → Ximen Village Office → Gymnasium → Juguang Tower → National Open University → Shuitou Village → Ming Yi Old Street → Wentai Tower → Zhaishan Tunnel → Zhushan → Jincheng Station.

### B Gungtingou Battlefield Route

Departs from Jincheng Station at 13:30

Jincheng Station/Entrance of Jincheng Civil Defense Tunnel → Jincheng Station → Ximen Village Office → Exit of Jincheng Civil Defense Tunnel → Public Health Center, Jincheng Township → Chimen Youth Activity Center → Guangjian Temple → Peace Memorial Park → Beishan Old Western-style house → Gungtingou Battle Museum → Shuangli Wetlands Nature Center → Cihu Triangle Fortress, Observatory → Jincheng Station.

### C Shishan Folk Culture Village Route

Depart from Shanwai Station at 08:30

1. (In service every Monday) Shanwai Station → Sha Mei Old Street → Sha Qing Rd. → Mashan Observation Post → Shishan (Lion Mountain) Howitzer Front → Kinmen Folk Culture Village → Kinmen Guest House → Shanwai Station.  
2. (In service every Tuesday to Sunday) Shanwai Station → Kinmen Folk Culture Village → Shishan (Lion Mountain) Howitzer Front → Mashan Observation Post → Cultural Park → Shanwai Station.

### D Banyan Park-Tai Lake Route

Depart from Shanwai Station at 13:30

Shanwai Station → 823 Artillery Battle Museum, Banyan Park and Mr.Yu Da-wei Memorial Hall → Brothel Exhibition Hall → Qionglin Village → Bicycle Story House → Chen Jing-lan Western House → Shanwai Station

### E Shisa-Themed Route (available on holidays)

Depart from Shanwai Station

1. (Daytime 08:30) Shanwai Station → Qionglin → Zhonglan → Hecuo (Hu Residence) → Doumen → Xiatangtong → Pujian → Liuaao → Lucco (Lu Residence) → Houzhai → Yangshan → Tiandun → Xiuyan → Tangtuo → Guanao → Shanwai Station.  
2. (Afternoon 13:30) Shanwai Station → Yangzhai → Xiwu → Dongheng → Bishan → Shanhou → Shamei → Houputou → Houshitou 1 → Dongxiao → Houshitou 2 → Caicuo (Cai Residence) → Dongshawei → Dongshan → Dongxi → Dadi → Tianpu → Nanshiung → Shanwai

### F Town Search Fun Cultural Miniatur (Sundays)

Departs from Jincheng Station at 08:30 & 13:30

Jincheng Station → Guanlubian Guguandao → Beimen → Gu Di Cheng Huang Temple → Ximen Wencheng (Urn City) Walls → Sui Yang Cheng Zhe Jie Temple → Nanmen, Jintou Old Factory → Ye Hua Cheng Former Residence → Wentai Tower, Xujiang Xiaowan Stone Inscription → Han Ying Yun Gen Inscription → Gugang Lake Side → Dongmen → (Suspected) Lu Wang Grave → Jincheng Station

### 票價

Half-Day Pass NTD 250  
One-Day Pass NTD 400  
Two-Day Pass NTD 700



24-Hour Toll-Free Travel Information Call Center 0800-011765

Taiwan Tourist Shuttle Bus Official Website

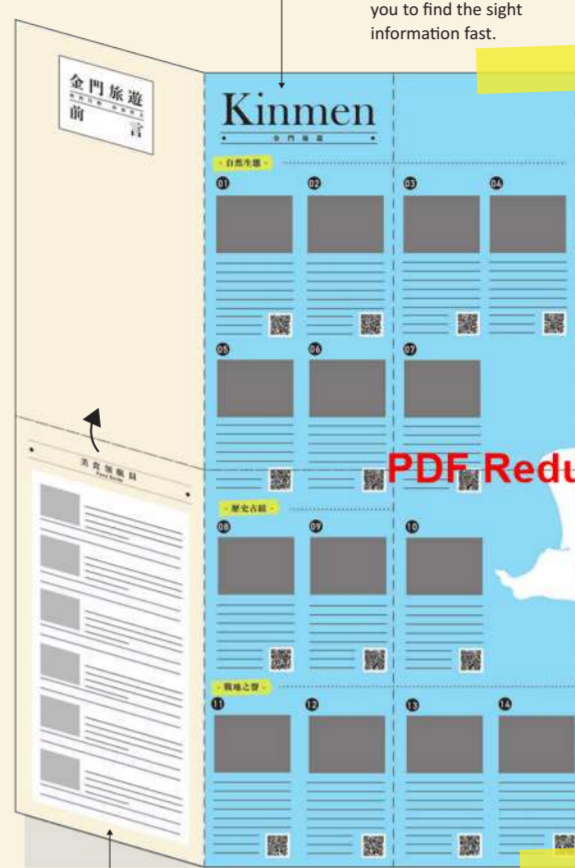
Ticketing Website

# TRAVEL NOTE

金門旅遊手札

## Tour Map

Marked with major tourist sights and their introductions allowing you to find the sight information fast.



## Food Guide

Delicacies of Kinmen are all recommended here. Check this section and find out the must-buy souvenirs!

## TRAVEL NOTE

ENGLISH

你的行程 由你作主  
YOUR TRIP, YOUR WAY

# TRAVEL NOTE

金門旅遊手札

# Kinmen

Lieuu Township

History Battlefield Ecology Villages Food

## 旅遊資訊諮詢處

Tourism Department, Kinmen County Government	金門縣民生路7號(4-5樓)	082-324174
Kinmen Airport Travel Info Centers	金門縣金湖鎮尚義里尚義機場2號	082-329354
Shuitou Pier Travel Info Center	金門縣金城鎮西海路一段5號	082-322124
Juguang Tower Travel Info Center	金門縣金城鎮賢城路2號	082-325632
Kinmen Military Headquarters of the Qing Dynasty Travel Info Center	金門縣金城鎮北門里滬江街53號	082-371717
Jincheng Station Travel Info Center	金門縣金城鎮民生路7號	082-325548
Jinsha Station Travel Info Center	金門縣金湖鎮環島東路一段112號	082-352360
Shanwai Station Travel Info Centers	金門縣金湖鎮黃海路90之1號	082-332814
Jiugong Pier Travel Info Centers	金門縣烈嶼鄉九宮碼頭	082-364881
Sun-Yat Sen Memorial Forest Travel Info Centers	金門縣金寧鄉伯玉路二段460號	082-313191
Shishan(Mt. Lion) Howitzer Front Travel Info Center	金門縣金湖鎮浮沙路376號	082-355697
Lincuo Fortress Travel Info Center	金門縣金寧鄉林厝50之6號(和平公園內)	082-321721
24-Hour Toll-Free Travel Information Call Center (Chinese, English, Japanese, Korean Services)		0800-011765
Kinmen Travel Bus Information Hot Route		082-332814



Kinmen Travel Website



Kinmen Travel Facebook

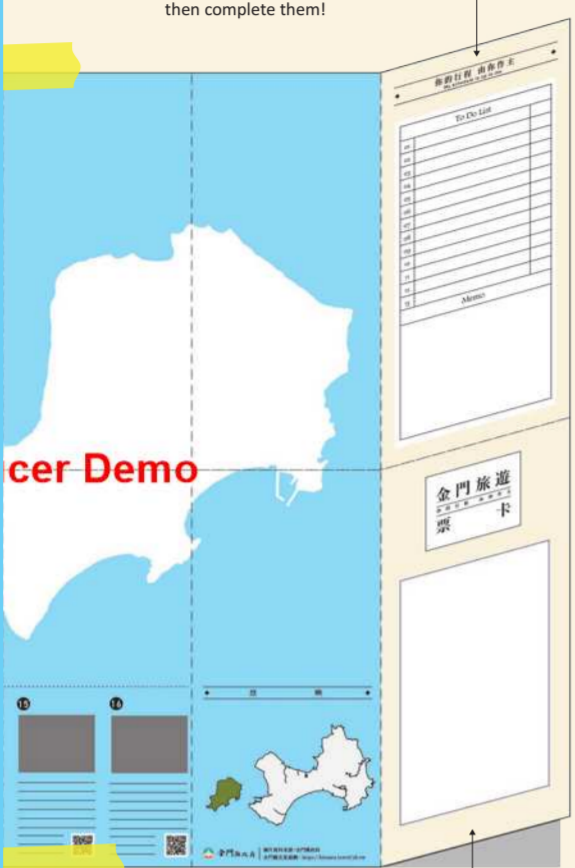
©2020 Kinmen County Government. All Rights Reserved  
金門縣政府敬啟 - 禁止轉售 - 著作權所有 - 翻印必究

出版 | 金門縣政府 地址 | 金門縣金城鎮民生路60號 電話 | (082)318823 [廣告]

This is the Kinmen Notebook exclusively for you. Read this page carefully, and keep your myriads of memories in the notebook.

## To Do List

Note down the sights you want to go or the things you want to do in Kinmen, and then complete them!

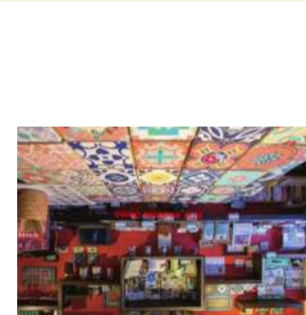


## Stubs Holding Section

Naste the stubs of your flight tickets and boat tickets to keep as keepsake!



## 11 Decent Cultural and Creative Gifts



The cultural origin generates the historical stories and humanities. The history and folklore Museum inherits the culture of Kinmen, with precious and rare artifacts, while Houpu Arts and Cultural Zone innovates the culture of Kinmen. See the aesthetics, and see the new culture.

## 08 Finding & Visiting Wind Lion God



The Wind Lion God, which is unique in Kinmen County on a large scale, has shaped the special cultural and humanistic landscape on the island. It is a characteristic landscape and important folk activities of various villages, representing the belief of the ancestors of Kinmen. As most of the shishas are carved out of stone, it is referred to by the folks of Kinmen as "Shishi Ye (The Stone Lion Master", or "Shishi Jiangjun (The Stone Lion General)". The main function of Shisa is to "suppress the wind and stop the evil". It is mostly located in the upwind locations. In modern times, it has become the popular cultural landscape of Kinmen, and by custom called it "Shisa".

## 05 Ecology

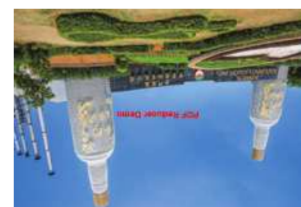


Located on the rim of Eurasia, Kinmen becomes the stopover site for migratory birds. On the intertidal zone at west estuary of Wujiang Brook does not only have a large number of migratory birds but also excites the picturesque view when the sunset reflects on the sea at dusk. Moreover, at Shuangli Wetlands Center, one can see the fusion of the historical houses and nature including people erected through the most glorious era, exuding history and arts with historical marks enriched through Gungtingou Battle, the Beishan Old Western Style Houses became the ages. Devastated by tens of thousands of artillery strikes under the Western Style Houses, it is as if one is traversing between the past and present.

## 02 Meander at the Western Style Houses



When speaking of Kinmen, what comes into one's mind always come with Kinmen kaoliang, (soybean liquor) which carries refined history of Kinmen, leaving the melon taste at the old battlefields of Kinmen. Descendants to return to their hometown and build Western-style houses. There are ones such as Chen Jing-lan Western House built in style similar to Western architecture with delicate carvings on symmetrical arches. Chen Qing-ji Western-style building with distinguished "San An Au Shou (Trip Records)" and "Zuo You Long (Left and Right Wings)".



Due to Kinmen's special geographical location, in the early days it attracted various many Chinese descendants to return to their hometown and build Western-style houses. There are ones such as Chen Jing-lan Western House built in style similar to Western architecture with delicate carvings on symmetrical arches. Chen Qing-ji Western-style building with distinguished "San An Au Shou (Trip Records)" and "Zuo You Long (Left and Right Wings)".

## 01 Art & Cultural Recreations



When walking into Kinmen's villages, one would see a combination of history and Minnan architecture packed with Minnan architecture Western style houses, Zhushan Village preserving the exquisite Minnan architecture, and the Suiyang Village history and Minnan architecture. One would see a combination of history and Minnan architecture packed with Minnan architecture Western style houses, Zhushan Village preserving the exquisite Minnan architecture, and the Suiyang Village history and Minnan architecture.

## 04 Historical Sites in the Battlefield



Revisits to the battlefield refreshes the memory. If Gungtingou Battle Musuem narates the battles of "Gungtingou Dajie" (Great Victory at Gungtingou), then Christian Tunnel is the military masterpiece showcasing the unquay workmanship. As a stronghold for propaganda in the old days and an attraction in the present, Mashan Observation Post landscape with marks of history inscribed by progression of time.

## 07 Strolling at Historical Sites



One place does not become a village without a temple and ancestral distastes. Evolved through dynasties, Xue Shi Dong Ancestral Shrine surpasses the "Kuch" (treasure point), and is the traditional Fengshui paradigm. After the immigration by vast array of migrants, the temples were built through the forming of new communities, which contributed to the construction of Huguo Temple. As one walks into the temple to savor the beauty of craftsmanship, one should also find the comfort within.

## 10 Delicacy



Kinmen is an all-encompassing culture. In addition to kaoliang culture, Kinmen's got great food people are delighted in mentioning). The Kinmen's got great food people are delighted in mentioning). The Kinmen's got great food people are delighted in mentioning).

## Bicycle Trail Routes

鐵馬自行車路線

**Bicycle rental stations**

- Liucco Fishing Harbor
- Lieuu Township Culture Museum

**Liucco Adventurous Scenic Route**

尋幽訪勝線

For more details, please scan QR-Code

For more details, please scan QR-Code



Lieuu, also known as Little Kinmen, is located on west-southwest of Kinmen Island. It is located between the two "Mens"-Kinmen and Xiamen, outside the Julong River Estuary in the southeast coast of Fujian Province, and within Xiamen Bay. Lieyu contains islands and islets such as Dandan Island, Erdan Island, Sandan Island, Sidan Island, Wudan Island, Fuxing Islet, Tiger Islet, Lion Islet, Binlang Islet, etc. Lieyu is under the jurisdiction of Kinmen County of the Republic of China. The island closest to mainland China is only 0.5 kilometers away. In a strategic location, it is "the outlying island among the outlying islands, and the frontline among the frontlines".



More about Lieyu sights

For related information, please visit the County's "Kinmen Travel Website" at: <https://kinmen.travel/en>

Gourmet Navigator  
美食領航員

Kinmen Street Foods | 金門小吃



**Iced Taro**  
Lieuu taro is especially famous for its specially silky texture and good taste! The great taste is resulted from the soil with red clay containing rich mineral content, which gives taro the surprisingly "fragrant, soft, and silky" texture. Served with plentiful ingredients of herbal grass jelly, red beans, bobas, and sweet potato balls, such delicacy would make your visit here worthwhile!

**Stir-Fried Instant Noodles**  
Instant noodles boiled and drained added with thin sliced vegetables, shredded pork and stirred egg are stir-fried quickly over high heat. The aromatic and nutritious fried instant noodles is the delicious midnight snack people having military service in Kinmen would yearn for.

**Rocky Oyster Vermicelli**  
Rocky Oyster Vermicelli is one of the featured local snacks a visitor must try in their trip to Kinmen. Served with pork blood, small intestines, oysters and other ingredients added, the vermicelli is rich in ingredients and delicious, fresh, sweet, and chewy without umami lost. Visitors must not miss it!

Kinmen Souvenirs | 金門伴手禮



**Handmade Vermicelli**  
The manual steps of vermicelli are always emphasized. First, flour and water or essence are mixed in appropriate ratio for making an elastic dough. Kinmen's suitable water quality and climate along with traditional manual procedures are characteristics allowing "Kinmen Vermicelli" to obtain remarks of "texture never overcooked" and "great taste with premium quality".

**Taro**  
The taro grown in Little Kinmen has a soft and silky texture making it melt in your mouth. Compared to taros grown in Taiwan, Little Kinmen taros contains a unique scent. Diced taro topped with hot syrup, crispy shredded taro, taro ice and more made from Little Kinmen Taro would make visitors mouth-watering nonstop!

**Gong Tang**  
Gong Tang is the tribute for offering to the royals at Minnan regions in Ming Dynasty, which features manual pounding and hammering of the peanut candy. With delicate and exquisite taste, melt-in-your-mouth flaky texture, crispy and fragrant feature, as well as authentic and pure quality, Gong Tang Candy has become one of Kinmen's specialties.

**Peanut Malao**  
Tiny doughs made from sticky rice powder blended with taro flour are put in the pan of hot oil. Then, the dough will expand into a honeycomb-like structure. After cooked, the expanded doughs are coated with hot syrup made of maltose and oil and then quickly breaded with peanut powder. This is indeed a delicious and non-sticky snack!

# Kinmen

## Lieuu Township

### - Nature & Ecology -

#### 01 Mao Gong Shi Island Recreation Area



Mao Gong Shi Island Recreation Area is located at the north of Little Kinmen Island gaining its name from the endemic red rocks "Maogong-shi". In Minnan, "Maogong (Cat Male)" is referred to ugly male with scars, dents and unsmooth skin on the face, hence, rocks with dents are also named "Mao Gong Shi".



#### 02 Lingshui Lake



The best route for bird watching in Lieyu Township, Kinmen County is located between Xihu and Lingshui Lake. Walking along the coastal boulevard for about two kilometers, visitors may watch 30 or 40 species of birds, or, visitors can follow the oyster guard post to the beach to can see a variety of waterbirds and enriched wetlands ecology through the tide and ebb.



#### 03 Shuangkou Coastal Park



With the coast only about 6 kilometers away from Xiamen, Shuangkou coast is Kinmen's closest beach to Xiamen Island. After 1949, it became the first line of coastal defense. In order to prevent enemy attacks, "trenches" around the village were dug around the village, and "anti-landing piles" on the tidal line were mounted, stretching for several kilometers, forming a spectacular view.



#### 04 Sihu Lake



Sihu Lake is a pure and clean wide lake. Seven tanks in various models are exhibited on the shore of Sihu, including M41A3 tanks, M18 Hellcat tank destroyers, M42 anti-aircraft gun, M5A1 light tank, etc., making this spot the best spot for tank fans to appreciate tanks. With quiet and natural atmosphere around, Sihu is a good place to stroll around without burden.



#### 05 Kirin Mountain



Kirin Mountain is located in the north-central part of Lieyu Township with an elevation of 119 meters. As the highest place on the island of Lieyu Township. In the early days, in response to continuous warfare, for war preparedness and military training, the Kirin Shooting Range was built in 1958 and then discontinued its original use and turned to sightseeing and recreation purpose in 2009.



#### 06 Donggang Quarry



Donggang is located on the southeast side of Lieyu. As the coast is rich in granite, it was turned into a quarry more than ten years ago for mining operations. The coastal topography was damaged due to long-term mining, but it created a clear section that facilitates the observation of the rock formation. Rocks with a different color from granite can be seen, which is worthy of close observation.



#### 07 Chingchi Port



Chingchi Port has a beautiful beach and rocky coast allowing visitors to overlook Fuxing Island. The rocky coast is mainly composed of granite, gneiss and quartz schist. Under coastal waves erosion and weathering along the joints and rock fracture zones, the unique natural landscape makes people indulged.



### - Historical Village Sites -

#### 08 Lieyu Township Culture Museum



Floor guide of the Culture Museum: The first floor is a permanent exhibition hall displaying the various tools and utensils used in daily lives and farming at Little Kinmen, as well as old cannons, movie projectors in early times, and various military and civil defense facilities. The second floor has a permanent exhibition and special exhibition space, cultural and historical research room, cultural relics collection room. There are giant bells, main hall decoration of temple, and God's palanquin on display.



#### 09 Lieyu Huxia Village Wall Paintings



Located next to the Victory Monument of the August 23rd Artillery Battle at Huxia Village, Little Kinmen, the themes include Kinmen ecology-otters, war images, grocery store in childhood years, etc. The plentiful colors painted the old times of this community, making visitors immerse in alleys full of art and history!



#### 10 Scholar Wu's Abode



Scholar Wu's Abode was built in the 20th year of Daoguang era, Qing Dynasty by Wu Jingshan, who earned a fortune through shipping and salt fields in Shangku. It is the largest old residence on Lieyu Island. It is located in the center of Shangku Villages in Shangji Village, with Lingshu in front of the Lake. The residence is a three-fall compound courtyard with two courtyards and two wings on the left and right, with a courtyard wall in the front. It is a large house with exquisite and gorgeous construction.



### - Sounds of Battlefield -

#### 11 Hujingtou Battle Museum



The exterior of the museum resembles a fort. The square displays weapons such as anti-aircraft artillery, 57 battle anti-cannon and machine guns, highlighting the strong atmosphere of the battlefield. There are different guide facilities such as guided commentary, practical artillery and shell display, and audio-visual playing. In wartime, Mashan in the northeast corner of the Great Kinmen, Gungting in the northwest corner, and Dadan Island are all bases for the old propaganda calls.



#### 12 Yongshi Fort



Yongshi Fort, one of Lieyu's three forts, holds a large area. There are underground traffic tunnels stretching hundreds of meters under the fort connected to the main military facilities respectively under the ground. They are also connected to the Tiejhan Fort, which is now also available for sightseeing. The connecting tunnel was renovated into a mine exhibition hall, allowing visitors to have a feel of passage under the ground.



#### 13 Shaxi Fort



Shaxi Fort holds a special position for its availability in overlooking Dadan Island, Erdan Island, Bilang Islet and Xiamen. It also shoulders important military responsibilities. Just like the various military strongholds of Kinmen and Little Kinmen, observation pavilion in the westernmost territory of Taiwan was available for sightseeing.



#### 14 Jiugong Tunnel



The most famous Jiugong Tunnel in the Little Kinmen as well as Zhaishan Tunnel in Kinmen Island are underground combat facility used to ensure the safety of military transportation and replenishment operations during the war. The main body of the tunnel is hard granite. The main tunnel is about 12 meters wide and has a height of approx. 7 meters. Starting from Jiugong Pier, it penetrates the mountain and extends all the way to Luocuo Fishing Harbor.



#### 15 General's Fortress



During the August 23rd Artillery Battle, late President Chiang Ching-kuo came to the front line by boat to discuss the battle with the major generals who stood there under the violent fire attack, which contributed to future victories. In memory of the dauntless soldiers, it was named the General's Fortress. In here you can feel the tension of day and night defense preparations for soldiers in this narrow space.



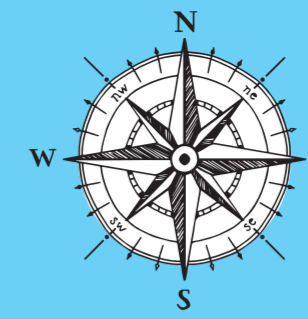
#### 16 Houlin Military Base and Shooting Simulator



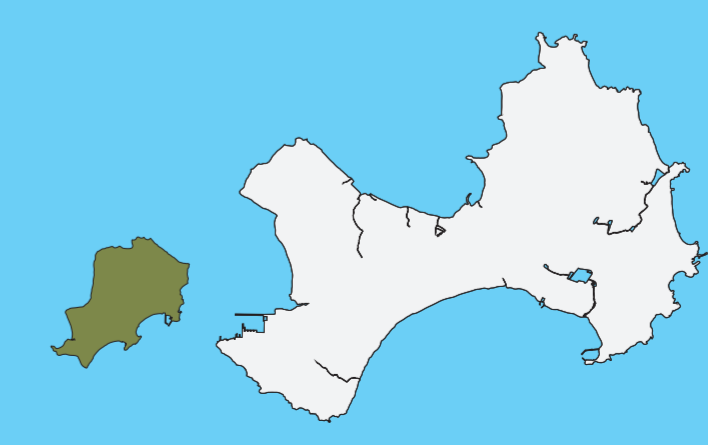
Don't forget to have your shooting simulation experience when visiting Lieyu. Put on the camouflage uniforms, carry your rifle, and become a general to defend your home in the animated simulation field. After completing the activity, you will even receive the certificate exclusive to you. Remember to make an appointment in advance so you won't miss the opening hours!



- Popular Sights of Lieyu
- Travel Info Centers
- Lieuu Township Bicycle Trails
- Major Streets
- Lakes & Rivers
- Boundaries of National Park
- Wetlands
- Wind Lion God
- Bicycle Rental Stations



## Lieuu Township



金門縣政府 Image Source: Kinmen County Government  
Kinmen Travel Website: <https://kinmen.travel/en>

## Your Trip, Your Way

你的行程 由你作主

To Do List	
01	
02	
03	
04	
05	
06	
07	
08	
09	
10	
11	
12	
13	

Memo

## KINMEN TRAVEL STUBS

YOUR TRIP, YOUR WAY



You can paste the ticket stubs at this section your way to commemorate your wonderful trip in Kinmen!